

Subscription Ticket Packages

7-Concert Classical Series

Only with this subscription can you guarantee the same seats for all seven Classical Series performances. Receive the very best seats! Choose your series day: Saturdays at 7:30 pm, Sundays at 3:00 pm, Mondays at 7:30 pm.

7-Concert Classical Series	\$686*	\$609	\$532*	\$455*	\$350	\$189
-----------------------------------	---------------	--------------	---------------	---------------	--------------	--------------

*Required donation: Parterre Box 1 & 3-9 = \$500/seat; Box 2 = \$250/seat; Balcony Center rows A & B = \$250/seat.

4-Concert Mini Series

Create your own 4-Concert Mini Series—choose four Classical Series concerts and enjoy the many benefits of subscribing. Mix and match Saturdays, Sundays and Mondays... whatever fits your schedule! 5-Concert packages available upon request.

4-Concert Mini Series	\$420*	\$368	\$328*	\$284*	\$220	\$120
------------------------------	---------------	--------------	---------------	---------------	--------------	--------------

*Required donation: Parterre Box 1 & 3-9 = \$500/seat; Box 2 = \$250/seat; Balcony Center rows A & B = \$250/seat.

Come As You Can Series

The ultimate choice for flexibility! Receive eight vouchers to redeem for tickets in any combination. Choose your Classical Series concerts, select your seats—it's up to you and your schedule. **\$456/eight vouchers**

Discovery Rehearsal Series

This affordable, casual, afternoon open rehearsal provides an opportunity to sit where you like and enjoy a unique perspective on the creative dynamic between orchestra and conductor as they rehearse each Classical Series concert. Saturdays at 2:00 pm. **\$119/Adult; \$70/Youth**

Please note, there will not be a Discovery rehearsal for the February 2026 concert. Included in the package price is one ticket for one of the performances on Saturday or Monday. No extra cost to you!

- All performances at Weill Hall, Green Music Center.
- Classical Series and Discovery Rehearsals are appropriate for children seven and older.
- Reserve ONE FREE TICKET for a youth 7-17 with each paid adult ticket. Can be reserved for all seven concerts as a subscription. Call Patron Services for assistance.
- Subscriptions are non-refundable and subject to availability.
- Programs, artists, dates and prices are subject to change.
- Single tickets on sale August 4, 2025.


Photo Credits: Julian Rhee by Todd Rosenberg, David Finckel and Wu Han by Lisa-Marie Mazzucco, Raphaël Feuillâtre by Stefan Höderath, Geneva Lewis by Matthew Holler Photography, Paul Watkins by Paul Marc Mitchell, Gabrielle Beteag by Lola Scott, Claire Huangci by Jean-Baptiste Millot, Francesco Lecce-Chong, Adelle-Akiko Kearns, and Patrons by Susan and Neil Silverman Photography, Musicians by Colin Talcraft.

Brochure design by Dennis Bolt



SPECIAL EVENTS

CELEBRATION 2025!
An Evening of Musical Elegance
New York Nights
 October 10, 2025
 Green Music Center, 6:00 pm
Honoring Esteemed Patron Sig Anderman
 Featuring Cellist David Finckel and Pianist Wu Han



Experience an enchanting evening of music, fine dining, and meaningful philanthropy, celebrating the arts and empowering young musicians through our transformative education programs.

Sig Anderman, renowned businessman, attorney, and philanthropist, has shaped a far-reaching legacy of cultural enrichment through his steadfast support and generous contributions. The Anderman Family Foundation's commitment resonates throughout our community, amplifying the symphony's positive influence.

Join us for an exclusive night of symphonic splendor, featuring a private recital on the iconic Weill Hall stage. Our guest artists are cellist David Finckel and pianist Wu Han who stand among today's most distinguished figures in classical music. Seating is limited for this extraordinary evening.

SUBSCRIBE TODAY!

PHONE: (707) 546-8742

IN-PERSON:

**50 Santa Rosa Ave.
1st Floor, Santa Rosa**

Open M, T, Th & F 9:00 am-5:00 pm;
W 10:30 am-5:00 pm; Closed Sat & Sun.

ONLINE:

srsymphony.org*

*7-Concert Classical Series subscriptions available for online purchases starting May 5, 2025

Road to 100 SANTA ROSA SYMPHONY 2025-2028

The Complete Beethoven Symphonies

YEAR 3



Sunday May 31, 2026 at 3:00 pm

Francesco Lecce-Chong, conductor | Weill Hall, Green Music Center

LUDWIG VAN BEETHOVEN: Symphony No. 4 in B-flat major
LUDWIG VAN BEETHOVEN: Symphony No. 6 in F major, *Pastorale*

In year three of the *Road to 100: The Complete Beethoven Symphonies*, SRS performs two of Beethoven's great works. Like a breath of fresh air, Symphony No. 4 is a luminous and graceful work, radiating noble simplicity. Symphony No. 6 journeys through idyllic landscapes, capturing humanity's profound connection to nature, and culminating in an uplifting hymn of gratitude.

Performed with the orchestra in unique configurations reflecting how the symphonies, in Beethoven's time, may have been played. Be a part of the journey to our centennial celebration in the 2027-2028 season!

Single Ticket Price	\$110	\$98	\$86	\$76	\$61	\$34
----------------------------	--------------	-------------	-------------	-------------	-------------	-------------

Tickets are non-refundable and subject to availability. Program, artists, date and prices are subject to change.

SANTA ROSA SYMPHONY

Francesco Lecce-Chong
Music Director

Resident Orchestra
Green Music Center



2025

2026

Invite · Ignite · Inspire

srsymphony.org

OCTOBER

Beethoven & Bernstein

October 11, 12 & 13, 2025

Francesco Lecce-Chong, conductor
Julian Rhee, violin
David Finckel, cello
Wu Han, piano

UMBERTO GIORDANO: Intermezzo from *Fedora*
LUDWIG VAN BEETHOVEN: Triple Concerto in C major for Violin, Cello, Piano and Orchestra
JULIA PERRY: *A Short Piece for Orchestra*
LEONARD BERNSTEIN: Symphonic Dances from *West Side Story*

Beethoven's Triple Concerto for violin, cello, and piano is a monumental work characterized by rich orchestral textures and the masterful artistry of its soloists. It features *Musical America's* Musicians of the Year cellist David Finckel and pianist Wu Han alongside violinist Julian Rhee. Bernstein's vibrant Symphonic Dances from *West Side Story* blends classical tradition, colorful instrumentation, and vibrant jazzy melodies for an exhilarating, toe-tapping experience.



Julian Rhee



David Finckel



Wu Han

NOVEMBER

Spanish Fiesta

November 8, 9 & 10, 2025

Francesco Lecce-Chong, conductor
Raphaël Feuillâtre, guitar
Leah Finn, mezzo

CLARICE ASSAD: *Baião 'N' Blues*
JOAQUIN RODRIGO: *Concierto de Aranjuez* for Guitar and Orchestra
MANUEL DE FALLA: *El sombrero de tres picos* [The Three-Cornered Hat]

Rodrigo's beloved complex yet elegant *Concierto de Aranjuez* finds new expression in the dazzling virtuosity of world-renowned guitarist Raphaël Feuillâtre. Manuel de Falla's *The Three-Cornered Hat* is filled with Spanish dance rhythms and rich melodies. Rounding out the program is Clarice Assad's *Baião 'N' Blues*, a lively fusion of Brazilian rhythms and American blues.



Raphaël Feuillâtre

DECEMBER

Geneva Plays Brahms

December 6, 7 & 8, 2025

Francesco Lecce-Chong, conductor
Geneva Lewis, violin

RUGGERO LEONCAVALLO: Intermezzo from *Pagliacci*
JOHANNES BRAHMS: Concerto in D major for Violin and Orchestra
JIMMY LÓPEZ: *Aino* (West Coast Premiere)
RICHARD STRAUSS: Suite from *Der Rosenkavalier*

Brahms' fiery Violin Concerto, with its sweeping melodies and emotional depth, comes to life through the artistry of returning guest violinist Geneva Lewis. Jimmy López's *Aino* is a stirring tone poem of defiance and tragedy, while Strauss' and Leoncavallo's works are steeped in operatic beauty—all inspired by love, sacrifice, and youthful vitality.



Geneva Lewis

JANUARY

Mendelssohn's Italian Symphony

January 10, 11 & 12, 2026

Paul Watkins, guest conductor & cello



Paul Watkins

CAROLINE SHAW: *Entr'acte* for String Orchestra
FRANZ JOSEPH HAYDN: Concerto No. 2 in D major for Cello and String Orchestra
FELIX MENDELSSOHN: Symphony No. 4 in A major, *Italian*

Renowned cellist Paul Watkins conducts and performs Haydn's spirited, uplifting Cello Concerto in D Major, known for its lilting melodies and wild, rapid-fire scales. Shaw's *Entr'acte* adds a fresh and modern perspective with its inventive take on classical tradition. Mendelssohn's *Italian Symphony* shines with exuberance and was celebrated by the composer as "the jolliest piece I've ever done."

FEBRUARY

Mahler's Third

February 21, 22 & 23, 2026

Francesco Lecce-Chong, conductor
Gabrielle Beteag, mezzo-soprano
Treble Voices of the SSU Symphonic Chorus,
Jenny Bent, director

GUSTAV MAHLER: Symphony No. 3 in D minor

Mahler's Third Symphony explores the human condition, nature, and the divine. With six movements, it reflects Mahler's philosophical quest to "embrace everything." Mezzo-Soprano Gabrielle Beteag and the Treble Voices of the SSU Symphonic Chorus, directed by Jenny Bent, return to Weill Hall to perform what is regarded as one of the greatest symphonies of all time.



Gabrielle Beteag



MARCH

Rossini & Schubert

March 21, 22 & 23, 2026

Francesco Lecce-Chong, conductor
Elizabeth Prior, viola; Adelle-Akiko Kearns, cello; Roy Zajac, clarinet;
Robert Giambruno, trumpet; Bruce Chrisp, trombone; Allen Biggs, marimba

GIOACHINO ROSSINI: Overture to *Il barbiere di Siviglia* [The Barber of Seville]
SHUYING LI: *Coping Cadences* (World Premiere)
FRANZ SCHUBERT: Symphony No. 8 in B minor, *Unfinished*
GIOACHINO ROSSINI: Overture to *Guillaume Tell* [William Tell]

Celebrate the artistry of two musical giants: Rossini's sparkling wit and Schubert's moving melodies. With its theatrical flair and rhythm-driven energy, Rossini's *William Tell* Overture contrasts beautifully with Schubert's *Unfinished* Symphony, which offers a glimpse of his profound creative brilliance and introspective lyricism. Additionally, the world premiere of Shuying Li's concerto grosso *Coping Cadences* ignites the imagination while merging traditional and contemporary elements.

MAY

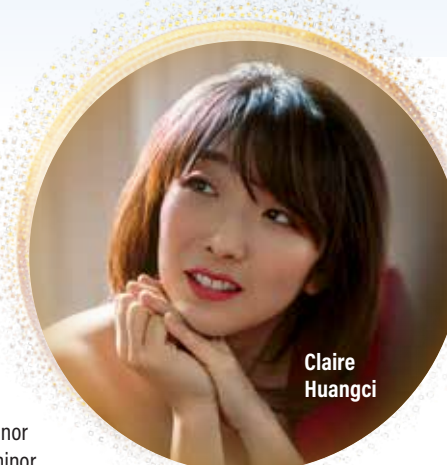
Shakespeare in Music

May 2, 3 & 4, 2026

Francesco Lecce-Chong, conductor
Claire Huangci, piano

SAMUEL COLERIDGE-TAYLOR: Incidental Music from *Othello*
WOLFGANG AMADEUS MOZART: Piano Concerto No. 20 in D minor
PYOTR ILYICH TCHAIKOVSKY: *Hamlet* (Fantasy Overture) in F minor
PYOTR ILYICH TCHAIKOVSKY: *Romeo and Juliet* (Fantasy Overture) in B minor

Step into the world of Shakespeare's dramatic, enduring tales. Tchaikovsky's passionate *Romeo and Juliet* is a timeless and familiar classic, while Coleridge-Taylor's evocative *Othello* offers a compelling counterpoint for interpreting Shakespeare in music. Plus, pianist Claire Huangci makes her Weill Hall debut with Mozart's expressive Piano Concerto No. 20.



Claire Huangci

SANTA ROSA SYMPHONY

Francesco Lecce-Chong, Music Director | Resident Orchestra, Green Music Center

2025–2026

Classical Series

Underwritten by Anderman Family Foundation

Weill Hall, Green Music Center

Saturday & Monday 7:30 pm, Sunday 3:00 pm

Pre-concert talks begin one hour before each performance.

Invite | Ignite | Inspire



Francesco Lecce-Chong,
Music Director and Conductor